

Making ERDF available for Financing Housing for Marginalized Communities

**The relevant indicators and the territorial
level of analysis for the characterization
of the marginalized communities**

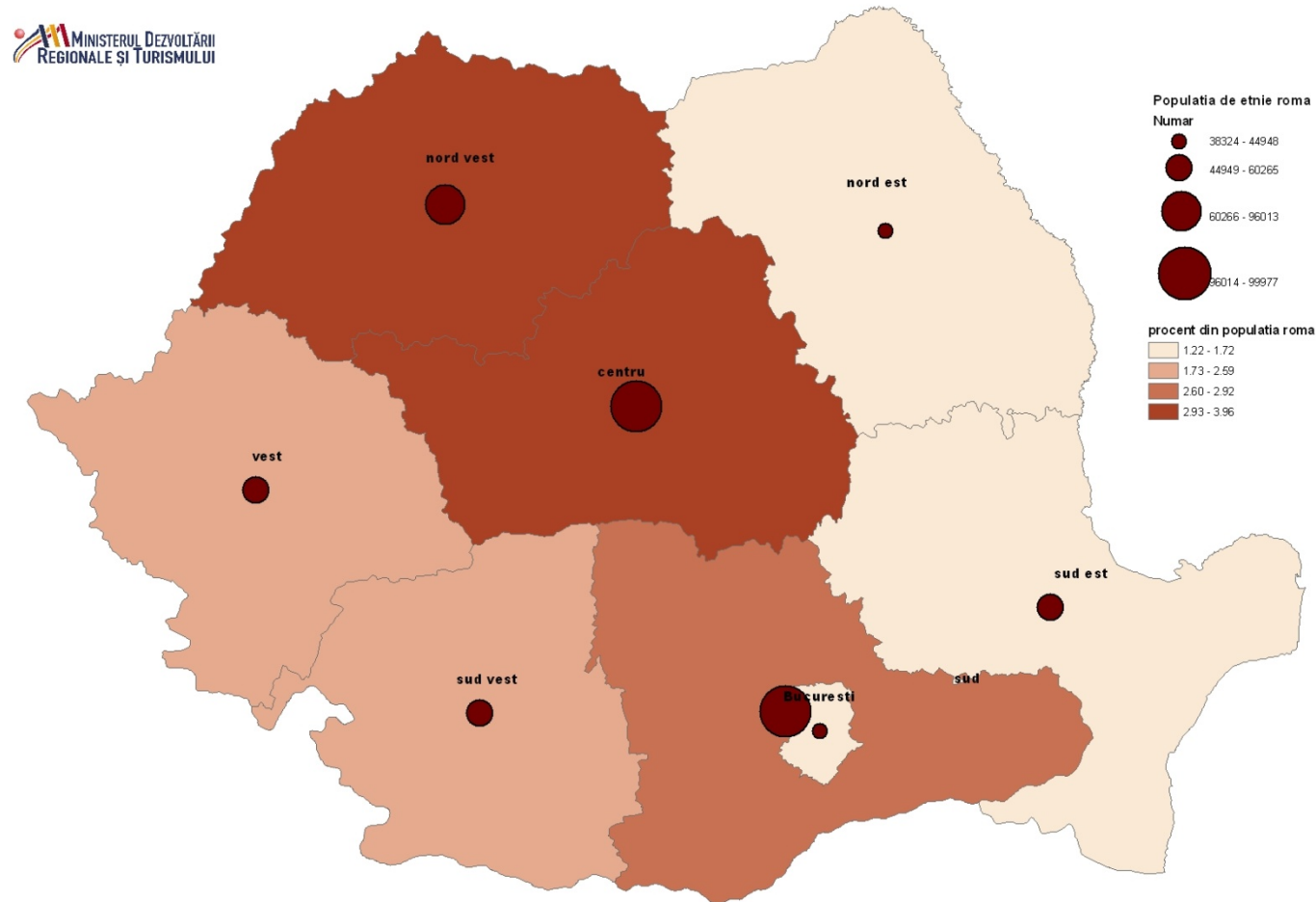
Bogdan SUDITU

Ministry of Regional Development and Tourism - Romania

Prague, March 3rd, 2011

Romania 2002 - 535.140 Roma people (2,5% of total population)

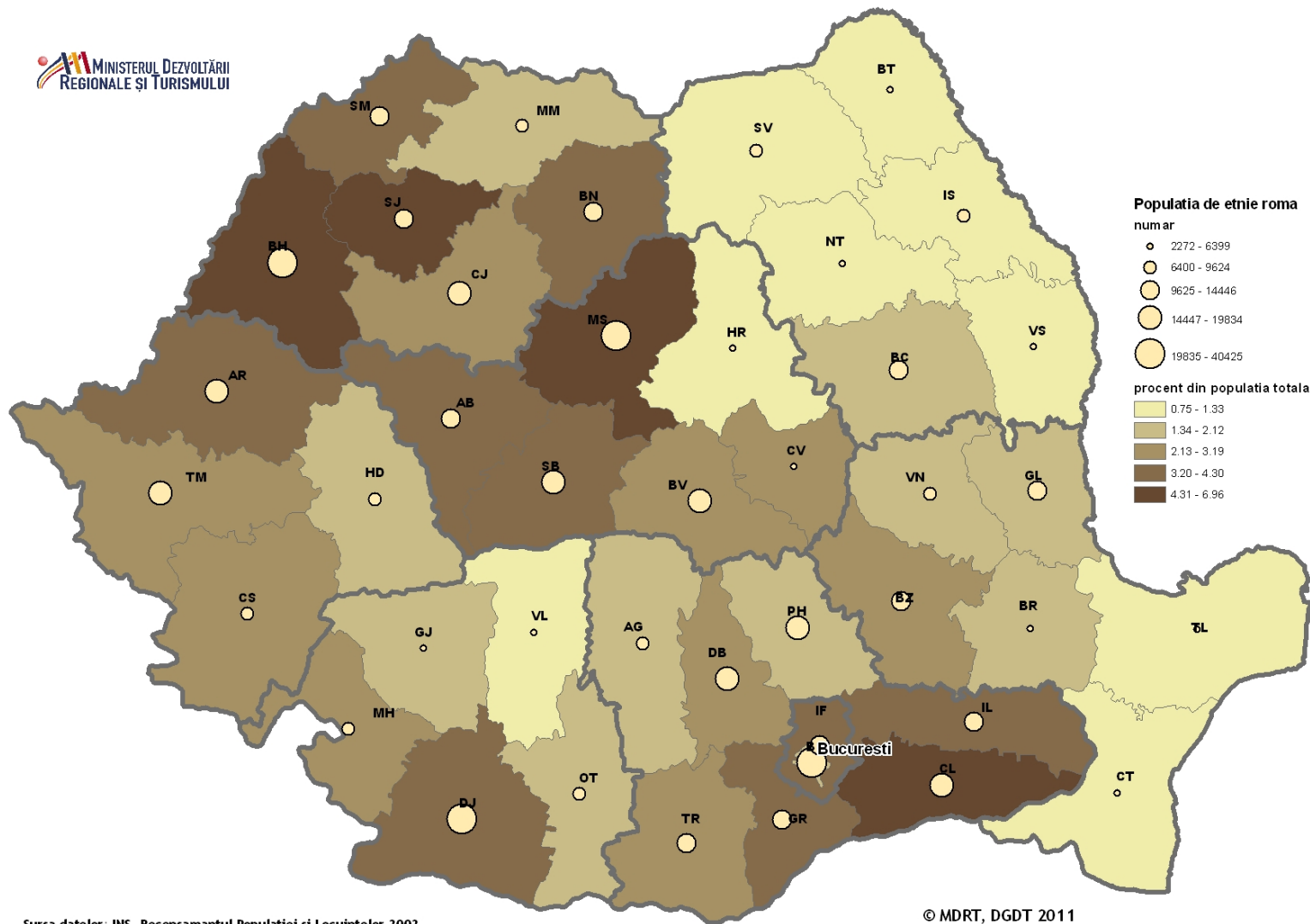
Regional repartition of Roma population



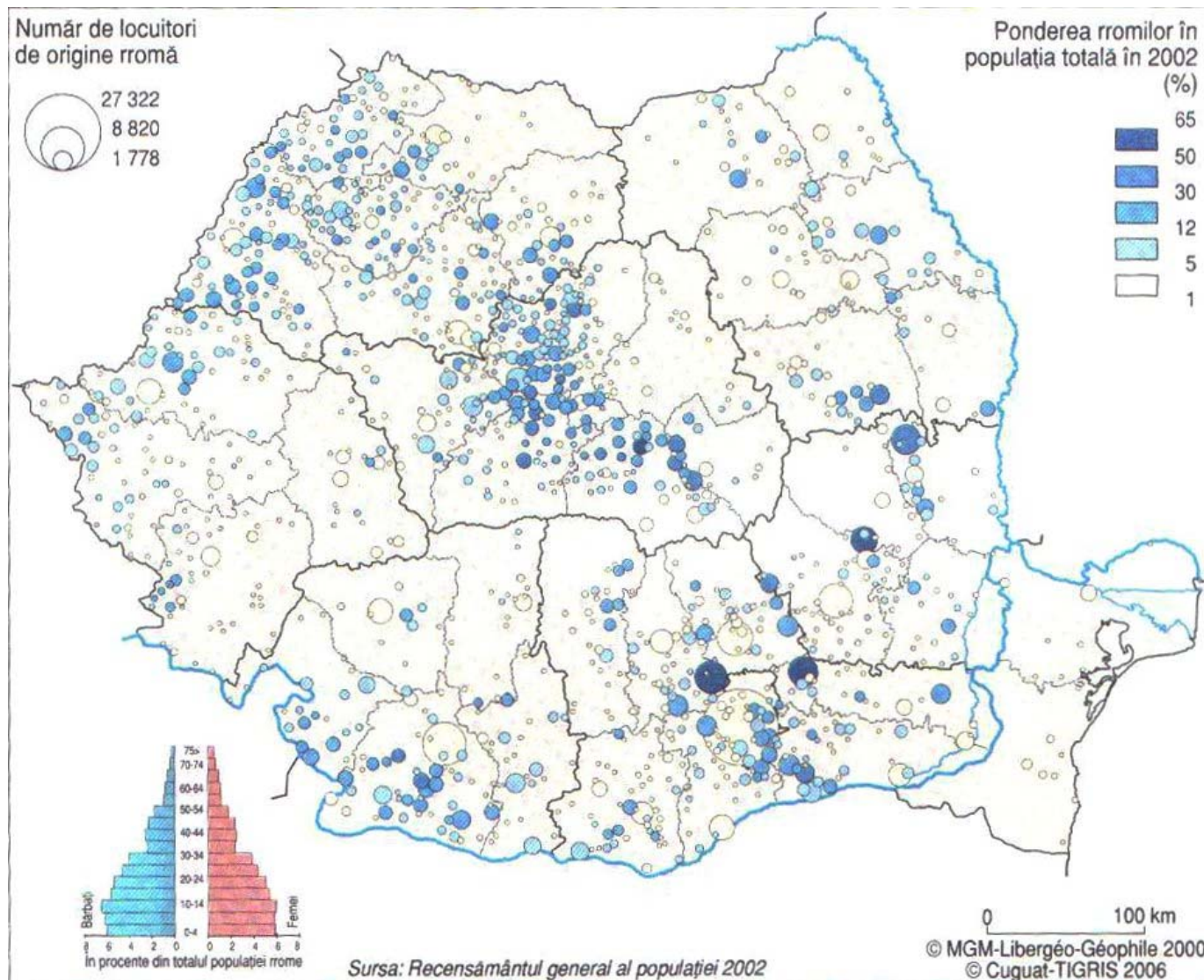
Sursa datelor: INS, Recensamantul Populatiei si Locuintelor 2002

© MDRT, DGD 2011

County repartition of Roma population



Cities and villages with Roma communities



Types of Roma Communities in Romania

A. Types of urban areas

1. *nationalized housing and old buildings in historical centre*

2. *multi-family housing buildings*

2.1. high-rise low-comfort building (in Romanian communist standard = *comfort III & IV*)

2.2. buildings used initially as single industrial workers hostels as sleeping place for workers, near-by the former industrial areas (some of them are presently brown fields)

2.3. areas with multi-family housing buildings with huge maintenance debts

3. *urban peripheries*

3.1. semi-rural housing areas from the cities' outskirts

3.2. informal settlements near the landfills

3.3. historical Roma communities included in the urban areas as a peripheral neighborhood



B. Types of rural communities:

1. *historical rural communities*

2. *formal or informal settlements*

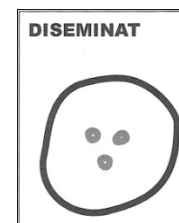
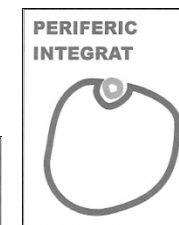
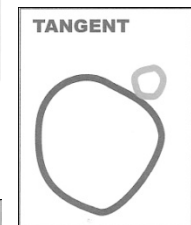
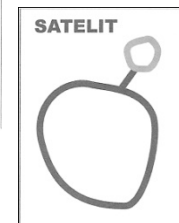
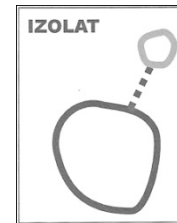
built on the border of a village

3. *isolated informal settlements*



Spatial relationship between marginalized communities and the built rural / urban area

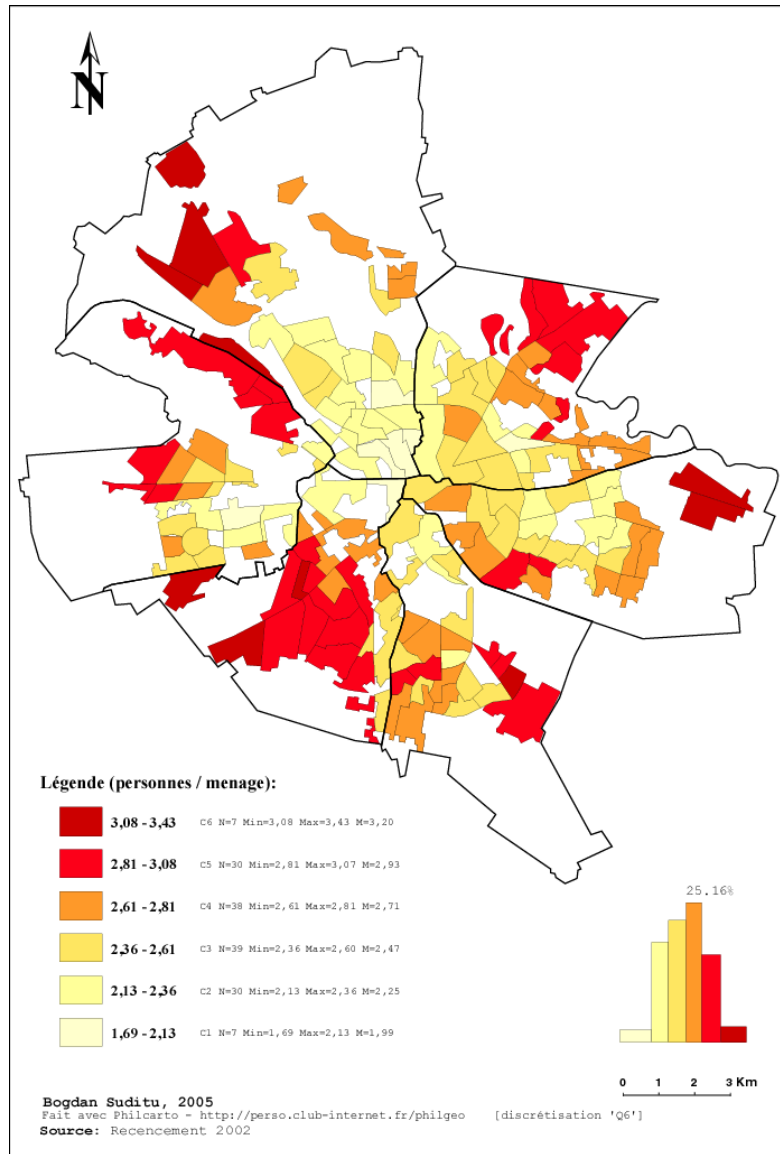
- a. isolated (the link at the physical proximity or the relationship link is very poor)
- b. satellite type (the link at the psychological proximity is very poor)
- c. tangent (peripheral separated by a physical obstacle, more or less penetrable)
- d. peripheral with a contact zone
- e. non-integrated incorporated type
- f. enclave
- g. disseminated



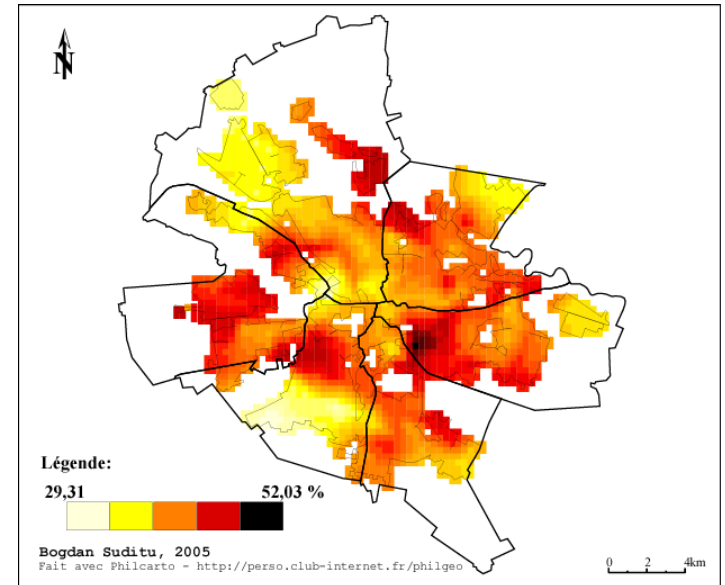
(cf. Berescu, Cătălin; Celac, Mariana, și colectiv)

The appropriated territorial level for relevant public intervention: Bucharest - 3 indicators

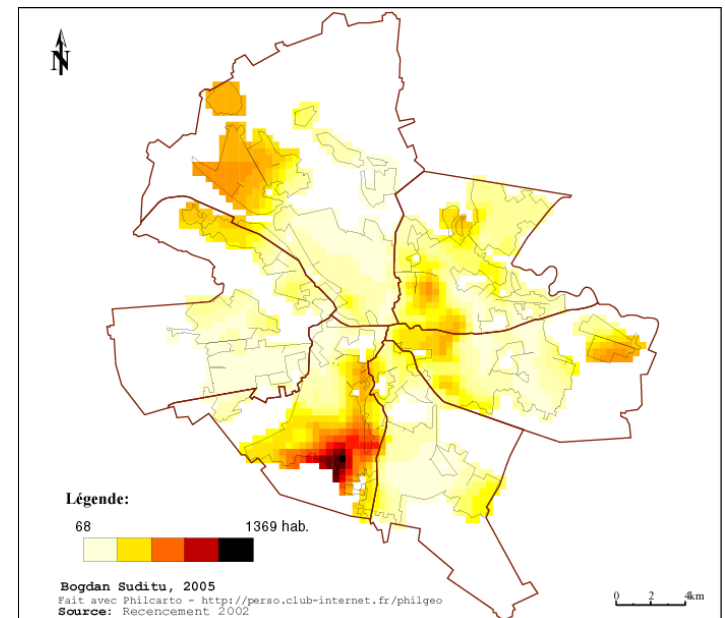
Medium size of the household (inhab./ household)



% of employed population



Total Roma population



The main problems of the marginalized Roma communities

- **In urban areas:**

- a relative concentration in the degraded areas, squatter settlements on public or private land;
- lack of secure tenure, eviction without a new social housing allocation;
- lack or inadequate access to basic public services;
- substandard housing or illegal and inadequate building structures;
- unhealthy living conditions and hazardous locations ;

- **In rural areas:**

- housing built on land not owned by the housing owner;
- lack or inadequate access to basic public services;
- substandard housing or illegal and inadequate building structures;
- unhealthy living conditions and hazardous locations .

Criteria to selecting and demarcating an intervention zone

The **quantitative-qualitative criteria are expressed through specific indicators**, referring to population, economic activity, urban morphology, technical and social equipment level, environment quality, expressing usually the “crisis” status of the intervention zone.

The collected indicators and information **must ensure a description of the area’s characteristics and problems** through absolute and relative values:

- **economic problems**: revealed through small no. of economic agents or insufficient jobs, etc.;
- **social problems**: revealed through unemployment, poverty, delinquency, limited access to services for persons presenting social risk (elderly, people with disabilities, etc.), lack of access to education for persons presenting social risk, school dropout, affiliation to different ethnic groups, etc.;
- **socio-demographic problems**: aging rate, reduced birth rate, increased rates of divorce, etc.;
- **environment problems**: level of phonic and air pollution, soil contamination;
- **equipment and infrastructure problems**: road infrastructure, technical-utilitarian infrastructure, social infrastructure, etc.;
- **housing problems**: indicators relating to surface, housing equipment, materials, age, etc.;
- **specific urban planning problems**: public spaces (urban squares, gardens, pedestrian alleys, etc.), public services, density of land occupancy and use, etc.

2011 & next years – a challenge and an opportunity

- 2011: national census
- The new experiences of the countries concerning the deprived areas and marginalized communities' projects

Thank you!

Bogdan SUDITU

bogdan.suditu@mdrt.ro