

GOOD PRACTICES IN IMPROVING THE  
ROMA REGIONAL COUNCIL ORDER TO  
ACCESS HOUSING IN RURAL AND  
URBAN AREAS.



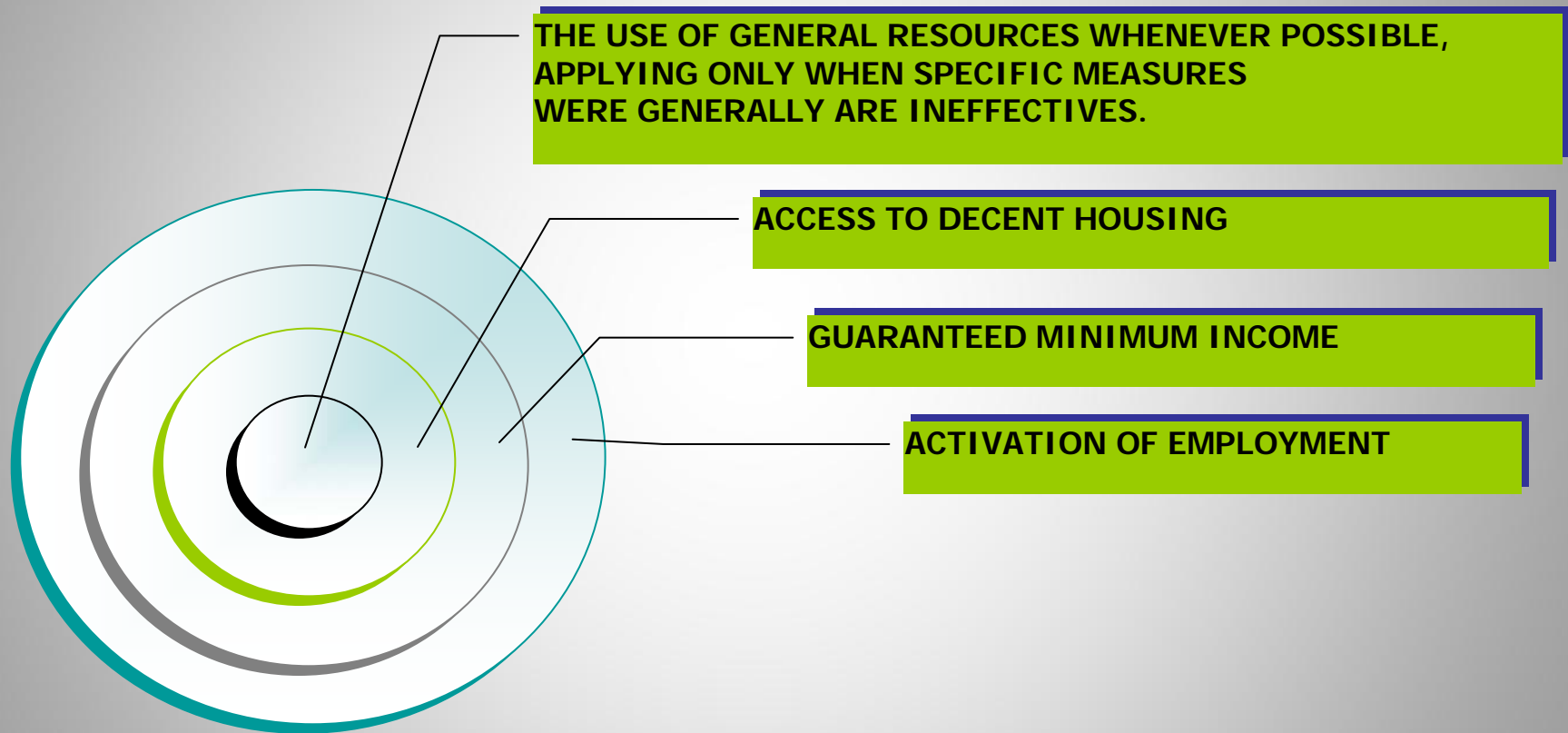


2012 CONTIGO AVANZAMOS

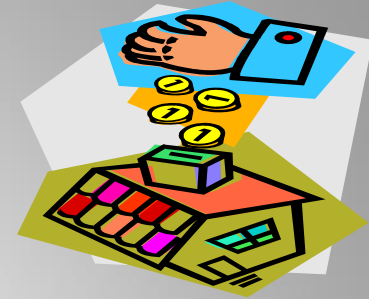


- Navarra autonomous region of northern Spain.
- Small population (610.000 habitants).
- Per capita income of 30.402 €
- Relative poverty rate 6%
- Unemployment rate, 11%

# PRINCIPLES OF SOCIAL INCLUSION STRATEGIES:

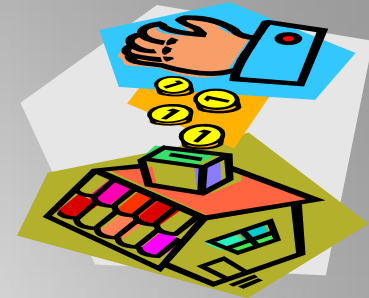


# VIS PROGRAM



- ➡ To facilitate access to housing, especially in property, people experiencing social exclusion, registered in Navarra for more than 3 years, with incomes below 1.7 times the minimum wage, and registered in social inclusion programs.
- ➡ Coordination between different players: Regional and Local Administrations and ONGs (collaborating institutions).
- ➡ Since 1998, 843 homes have been acquired.

# VIS PROGRAM



- ▶ Purchase granted by the Department of Housing ranges from 15% to 50% of purchase value (50% in all cases whether to rehabilitate the house).
- ▶ Supplemented with 10% by the Department of Social Affairs for the processing costs of that purchase and grant to collaborating institutions for the accompaniment to the purchase and during the three years after purchase.

# VAIS PROGRAM



- Supplements the VIS Program, introducing a new performance addressed to rent.
- For people experiencing social exclusion, registered in Navarra for more than 3 years, with incomes below 1 IPREM, registered in social inclusion programs and not being the owner of the property or having the right to use another home, over the last 5 years.
- Coordination between different players: Local and Regional Administrations, ONGs. EISOVI.

# VAIS PROGRAM



2009 Pilot basis 14 homes for rent.

2010 42 homes for rent.

- People access directly to the official protection rent under specific conditions: grant of 75% of the total rent, deposit of one month's rent.
- Department of Social Affairs grant to the collaborating institutions for the social support. 5 years.

GOOD PRACTICES IN IMPROVING THE  
ROMA REGIONAL COUNCIL ORDER TO  
ACCESS HOUSING IN RURAL AND  
URBAN AREAS.



**THANK YOU FOR YOUR ATTENTION**  
**MORE INFORMATION [www.navarra.es](http://www.navarra.es)**