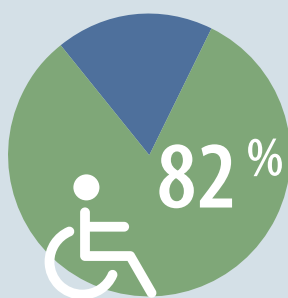


# ELECTION AUTHORITIES

## What can you do to get more people with disabilities to vote?



### DESPITE BARRIERS, PEOPLE WITH DISABILITIES TURN OUT TO VOTE



On average, 82 % of people with disabilities voted in the last national election.

In the EU, large numbers of people with disabilities vote in elections.

But many people with disabilities often face problems in voting because of inaccessible buildings and information.

### MAKE ONLINE INFORMATION ACCESSIBLE



Accessible in 10 Member States:  
CZ, DK, IE, IT, LU, AT, PT, SK, SE, UK



Partially accessible in 12 Member States:  
BE, BG, DE, EL, ES, HR, LV, LT, HU, NL, PL, FI

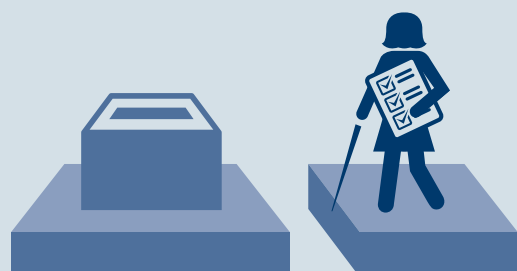


Not accessible in 6 Member States:  
EE, FR, CY, MT, RO, SI

Many websites with voting instructions and candidate information are inaccessible.

For example, websites often cannot be read by screen readers used by blind people.

### MANY POLLING STATIONS ARE NOT ACCESSIBLE



Most Member States lack data on how many polling stations are accessible. Accessibility tends to focus on people in wheelchairs, rather than blind or deaf people, for example.

Some unofficial data in 4 Member States:  
DK, IE, PT, UK

4

No data in 11 Member States:  
BE, CZ, EL, FR, HR, IT, LU, MT, RO, SK, FI

11

Some official data in 13 Member States:  
BG, DE, EE, ES, CY, LV, LT, HU, NL, AT, PL, SI, SE

13

### PROVIDE TRAINING FOR ELECTION OFFICIALS

Training required by law in 1 Member State:  
HR

1

No training required by law/ No information in 12 Member States:  
DE, EE, LV, LU, HU, MT, NL, AT, PT, RO, SK, SE

12

Some relevant training available, but not required by law in 15 Member States:  
BE, BG, CZ, DE, IE, EL, ES, FR, IT, CY, LT, PL, SI, FI, UK

15



### MAKE INFORMATION ABOUT HOW TO COMPLAIN ACCESSIBLE

Information for complaining about problems when voting is often inaccessible.

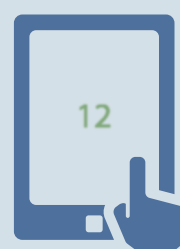
Such information should be clearly marked at polling stations and well signposted online.



Accessible in 6 Member States:  
CZ, ES, LT, MT, PL, SE



Partially accessible in 10 Member States:  
BE, BG, LV, HU, NL, AT, PT, SI, FI, UK



Not accessible in 12 Member States:  
DK, DE, EE, IE, EL, FR, HR, IT, CY, LU, RO, SK

For more human rights indicators: <http://bit.ly/Rltbbn>

BE: Belgium; BG: Bulgaria; CZ: Czech Republic; DK: Denmark; DE: Germany; EE: Estonia; IE: Ireland; EL: Greece; ES: Spain; FR: France; HR: Croatia; IT: Italy; CY: Cyprus; LV: Latvia; LT: Lithuania; LU: Luxembourg; HU: Hungary; MT: Malta; NL: Netherlands; AT: Austria; PL: Poland; PT: Portugal; RO: Romania; SI: Slovenia; SK: Slovakia; FI: Finland; SE: Sweden; UK: United Kingdom