

POLITICAL PARTIES

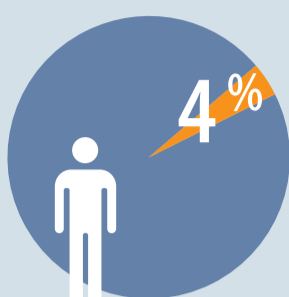
The votes of people with disabilities count too



PEOPLE WITH DISABILITIES ARE MEMBERS OF POLITICAL PARTIES



People with disabilities

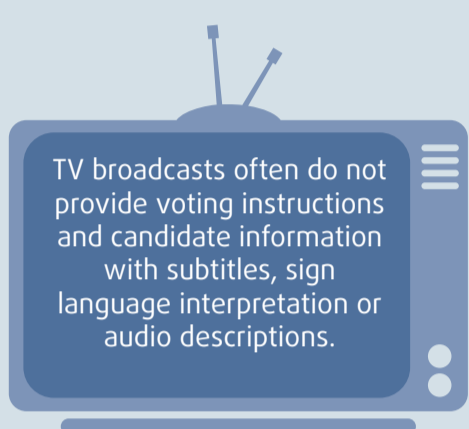


General population

People with disabilities are more likely to be members of a political party than the general population.

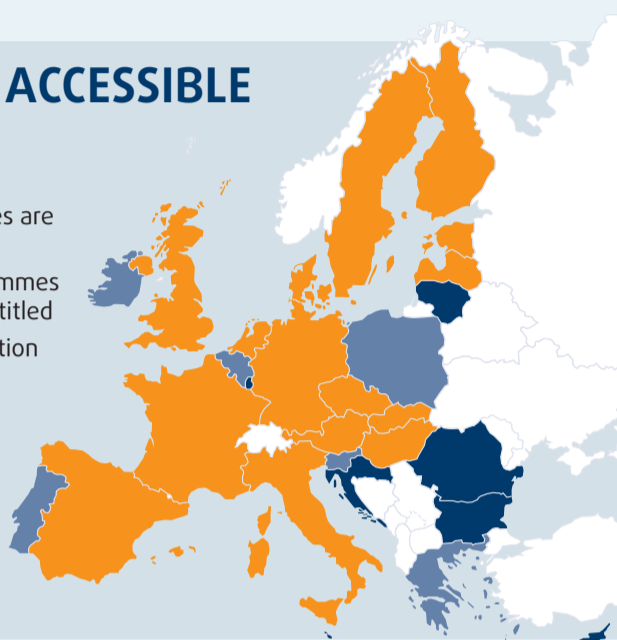
But many political party activities are inaccessible.

MAKE TV ELECTION BROADCASTS ACCESSIBLE



TV broadcasts often do not provide voting instructions and candidate information with subtitles, sign language interpretation or audio descriptions.

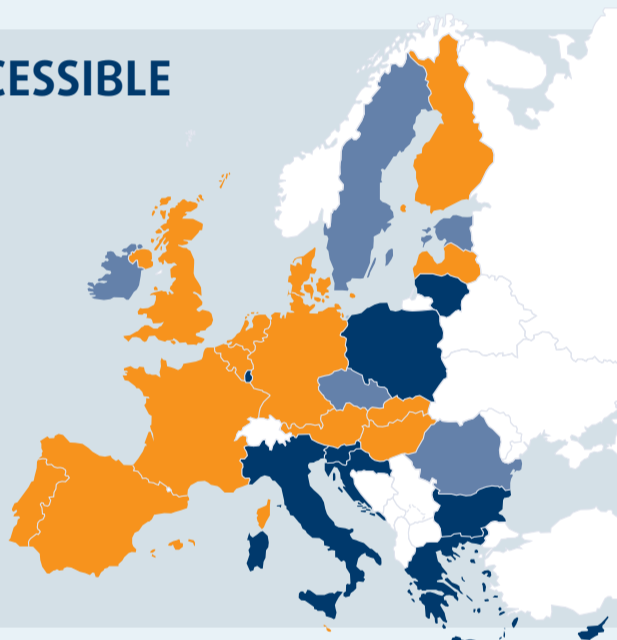
- Some key programmes are subtitled
- Key programmes are not subtitled
- No information



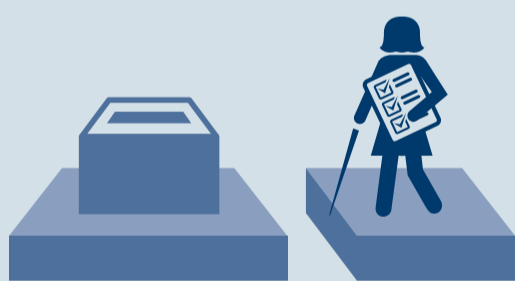
MAKE ELECTION MANIFESTOS ACCESSIBLE

Many parties do not provide election manifestos in accessible formats such as easy-to-read, braille, large print or audiovisual versions.

- Some political parties provided accessible manifestos
- No political parties provided accessible manifestos
- No information

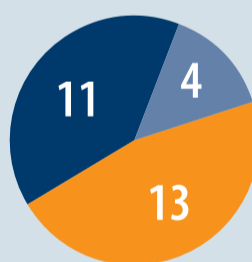


ENSURE POLLING STATIONS ARE ACCESSIBLE



Most Member States lack data on how many polling stations are accessible. Accessibility tends to focus on people in wheelchairs, rather than blind or deaf people, for example.

No data in 11 Member States:
BE, CZ, EL, FR, HR, IT, LU, MT, RO, SK, FI



Some unofficial data in 4 Member States:
DK, IE, PT, UK

Some official data in 13 Member States:
BG, DE, EE, ES, CY, LV, LT, HU, NL, AT, PL, SI, SE

SUPPORT MEMBERS OF PARLIAMENT WITH DISABILITIES



Little is known about how many people with disabilities are elected to their national parliament. Where data exists, it shows very low numbers of members of parliament (MPs) with disabilities.

No MPs identified as having a disability in 2 Member States:
CY, LU

2

Some MPs identified as having a disability in 13 Member States:
IE, EL, ES, FR, HR, IT, HU, MT, NL, AT, PL, PT, UK

13

No data in 13 Member States:
BE, BG, CZ, DK, DE, EE, LV, LT, RO, SI, SK, FI, SE

13

For more human rights indicators: <http://bit.ly/Rltbbn>

BE: Belgium; BG: Bulgaria; CZ: Czech Republic; DK: Denmark; DE: Germany; EE: Estonia; IE: Ireland; EL: Greece; ES: Spain; FR: France; HR: Croatia; IT: Italy; CY: Cyprus; LV: Latvia; LT: Lithuania; LU: Luxembourg; HU: Hungary; MT: Malta; NL: Netherlands; AT: Austria; PL: Poland; PT: Portugal; RO: Romania; SI: Slovenia; SK: Slovakia; FI: Finland; SE: Sweden; UK: United Kingdom